

Kit Contents		
Description	Part No	Pcs
Shock absorber	HO 652	1
Bracket	01165-32	1
Bracket(Alt.option)	01165-06	1
Screw M6x25	05404-06	2
Screw M8x35	01046-11	2
Nut M6	00430-02	2
Washer	00426-06	2
Tie-rap	60231-03	3
Sticker set	10207-01	1
Owner's manual	07241-02	1

Note!

Please note that this image is a general representation of the product and may differ slightly from your product.

Note!

Please note that during storage and transportation, especially at high ambient temperature, some of the oil and grease used for assembling may leak and stain the packaging. This is in no way detrimental to the product, wipe off the excessive oil/grease with a cloth.

Note!

Before installing this product, check the contents of the kit. If anything is missing, please check an Öhlins dealer.

Warning!

Before installing this product, read the Öhlins Owner's Manual. The shock absorber is an important part of your vehicle and will affect the stability.

Shock Absorber for Honda XL750 Transalp

HO 652

Mounting Instructions

MOUNTING INSTRUCTIONS

⚠ Warning!

It is advisable to have an Öhlins dealer install the shock absorber.

⚠ Warning!

If working on a raised vehicle, ensure it is securely supported so that it will not tip over.

👁 Note!

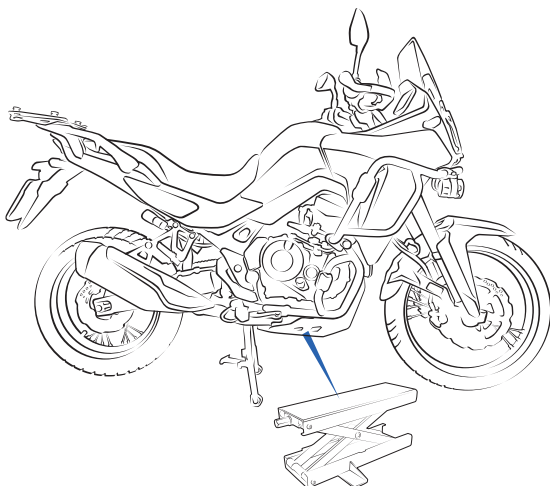
Before mounting this product clean the vehicle thoroughly.

👁 Note!

When working on this product, always see the Vehicle Service Manual for vehicle specific procedures and important data.

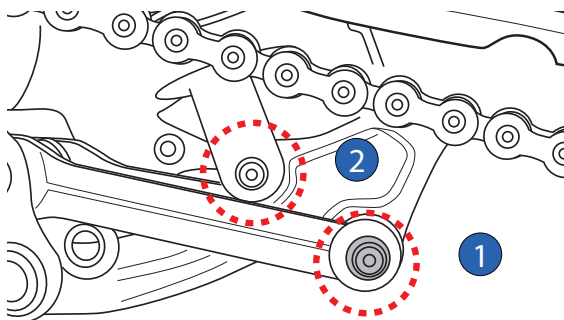
1.

Put the motorcycle on center stand/work stand so that the rear wheel barely touches the ground. Make sure the motorcycle is in a stable position.

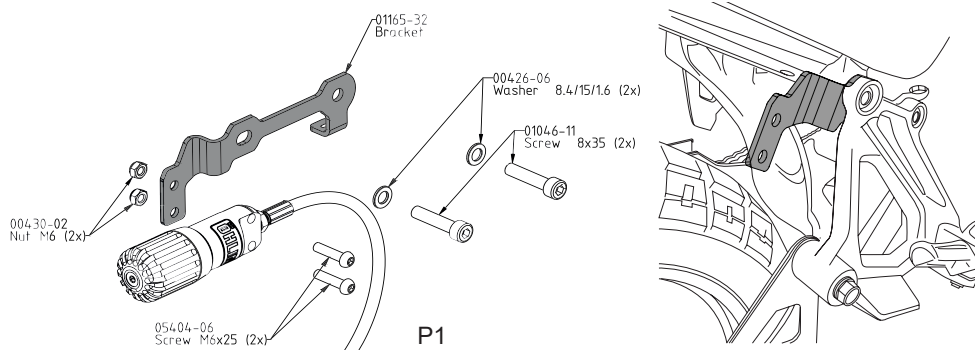


2.

Remove the standard shock absorber by loosening the screws connecting the triangle link and pull rods ① and loosening the lower and upper screws ②③



MOUNTING INSTRUCTIONS



6.

Install the hydraulic preload adjuster into the bracket 01165-32 by following the diagram P1

Install the bracket 01165-32 between the passenger foot peg mount and subframe, by using 00426-06 washers and 01046-11 screws

7.

Install the Öhlins shock absorber with the position the gas filling valve pointing toward the rear of motorcycle and tighten the upper and the lower mounting screws ①②③ at a torque value as specified in the vehicle.

8.

Use the supplied tie-raps 60231-03 to fasten the hoses to bracket and as picture shown.

Note!

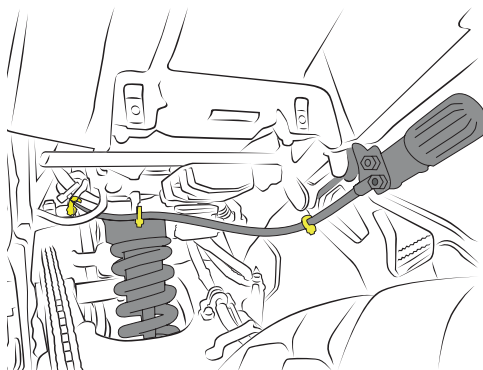
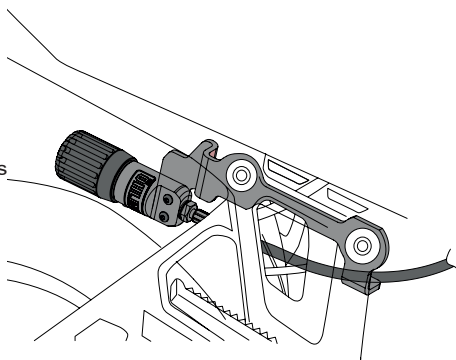
Use the universal bracket 01165-06 supplied in the kit to mount the hydraulic preload adjuster on motorcycle whose saddle bags interfere with the standard installation.

Note!

Lower the vehicle so that the suspension is slightly compressed before tightening the screws.

Caution!

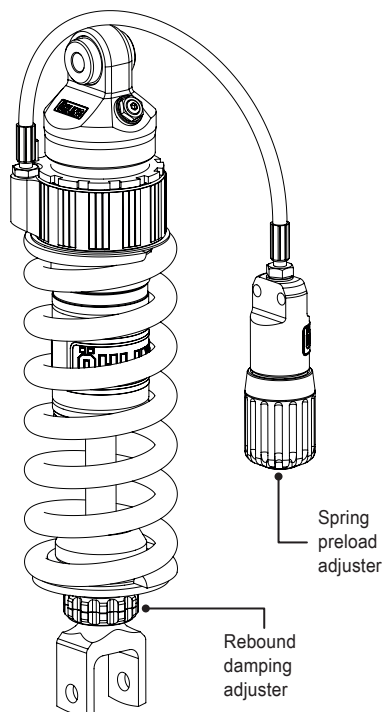
Ensure that all screws are tightened to the correct torque and that nothing fouls or restricts movement of the shock absorber when the suspension is fully compressed or extended.



ADJUSTMENTS

⚠ Warning!

Before riding, always make sure that the basic settings made by Öhlins are according to recommended Set-up Data. Read about adjustments and setting up in the Öhlins Owner's Manual before you make any adjustments. Contact an Öhlins dealer if you have any questions about setting up.



SET-UP DATA

Recommended set-up

Spring Preload..... 6 mm.
Rebound adjuster 16 Clicks

Shock absorber data

Length 345 mm.
Stroke 75 mm.

Spring Installed spring

Part No 61096-31
Free spring length... 190 mm.
Spring rate..... 95 N/mm
Preload adj.range.... [-2/+8] mm.

👁 Öhlins products are subject to continuous improvement and development, therefore, although these instructions include the most up-to-date information available at the time of printing, minor updates may occur.

To find the latest information contact an Öhlins distributor. Please contact Öhlins if you have any questions regarding the contents in this document.

Part no. MI_HO 652_EN_0
Issued 2025-04-07

© Öhlins Asia Co. Ltd. All rights reserved. Any reprinting or unauthorized use without the written permission of Öhlins Racing AB is prohibited.

Öhlins Asia Co. Ltd
700/937 Moo5, Tambol Nongkhaga,
Amphur Phantong, Chonburi Province
20160 Thailand



www.ohlins.com