

AKRAPOVIČ

SLIP-ON RACE LINE (S-PO/TI/14)

for the 911 Carrera (992) with non-sport exhaust

INSTALLATION RECOMMENDATIONS



PORSCHE 911 CARRERA (992) NON-SPORT EXHAUST LOOK

If your Porsche Carrera 911 (992) has one of the following stock tailpipe design options and you want to fit the Akrapovič Race Slip-On Line (Titanium) exhaust on the car, then follow the recommendations below.

The Akrapovič Race Slip-On Line (Titanium) exhaust was originally developed as replacement for the sport stock Porsche 911 Carrera (992) exhaust.

1. 911 Carrera / Carrera4 default tailpipe (trapezoid)



2. 911 Carrera / Carrera4 with Sport design / Aero Kit* and default tailpipe (trapezoid)



3. 911 Carrera / Carrera4 with sport tailpipes (double round)



4. 911 Carrera / Carrera4 with Sport design / Aero Kit* with sport tailpipes (double round)



5. 911 Carrera S/4S default tailpipe (double round)



6. 911 Carrera S/4S with Sport design / Aero Kit* with default tailpipe (double round)



Because the Akrapovič exhaust replaces the Porsche sport exhaust, it is only possible to install the Akrapovič exhaust on cars that have the same bumper and diffuser as the ones with the Porsche sport exhaust.

* **Sport design / Aero Kit:** different rear apron (diffuser) with distinctive design

Cars with the Porsche sport exhaust look like this:

1. 911 Carrera (all models) with Porsche sport exhaust



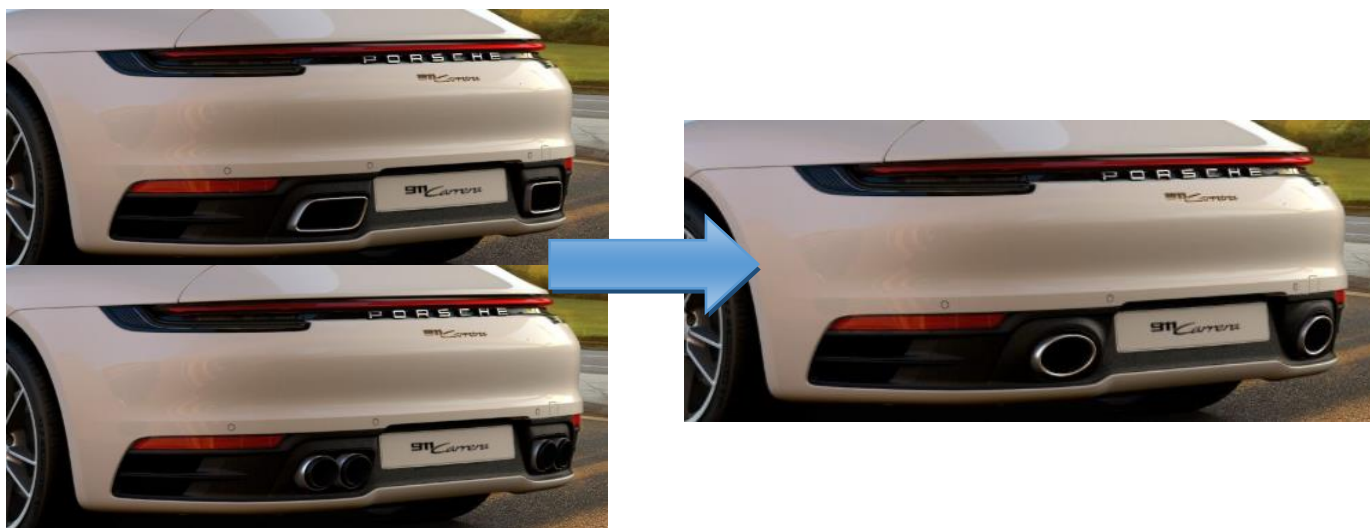
2. 911 Carrera (all models) with Sport design / Aero Kit with sport exhaust



With one option, the car must be modified from the picture on the left to the one on the right to allow installation of the Akrapovič Slip-On Race Line (Titanium). To do this, some stock parts from Porsche must be purchased.

911 Carrera basic – without Sport design / Aero Kit

Number plate position → **in the diffuser**



The following Porsche part numbers must be ordered according to the region where the car is located because different regions use different number plate dimensions and thus different diffuser part numbers.

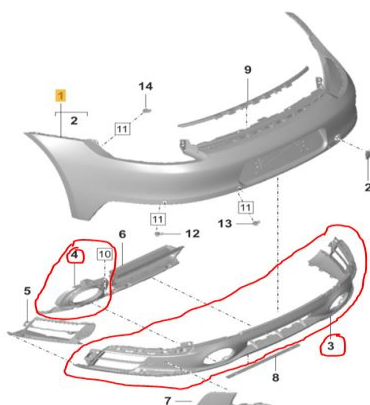
Be aware that these part numbers are given only as guidance or reference and must be checked with local Porsche dealers or specialists before ordering. Akrapovič takes no responsibility if the suggested part numbers do not fit on the car.

Porsche Diffuser (part number 3 on the schematic below)

ECE: 992 807 983A
USA: 992 807 983B
JPN: 992 898 014Q
CHINA: 992 898 014N

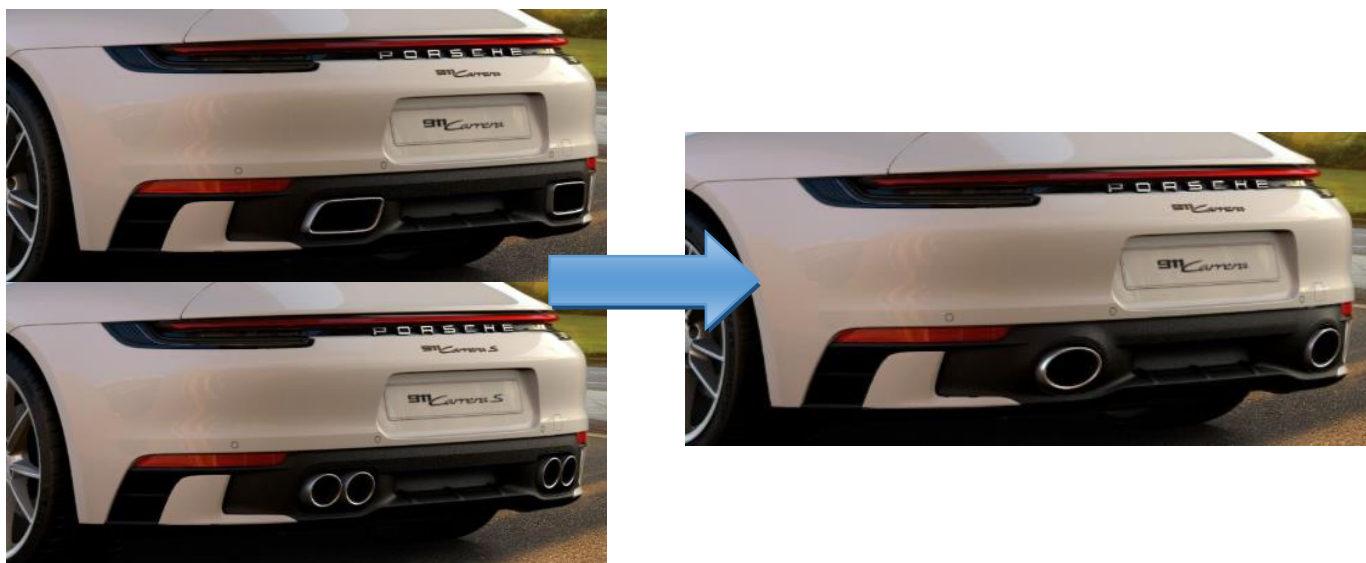
Porsche Oval Tailpipe Bracket Left: 992 807 833A

Porsche Oval Tailpipe Bracket Right: 992 807 834A (part number 4 on the schematic below)



911 Carrera with Sport design / Aero Kit

Number plate position → on the bumper



Porsche Diffuser 992 898 014 AN (same part number worldwide)

Porsche Oval Tailpipe Bracket Left: 992 807 833C

Porsche Oval Tailpipe Bracket Right: 992 807 834C

For installation of these parts, follow the installation instructions for the Akrapovič Slip-On Race Line (Titanium) S-PO/TI/14, which can be found at this [LINK](#).